

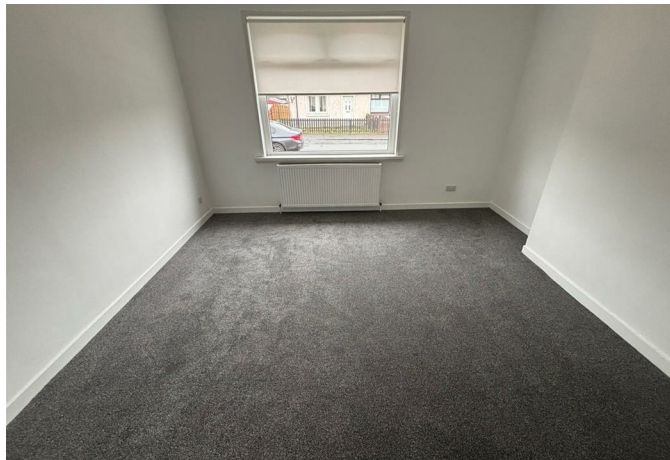


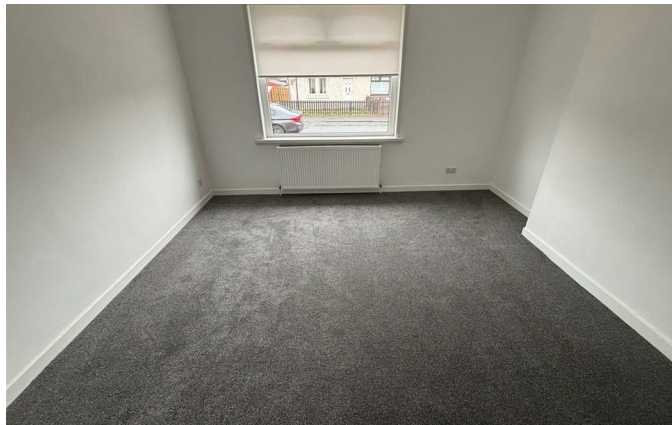
3 Clyde Drive, Shotts, ML7 5LY

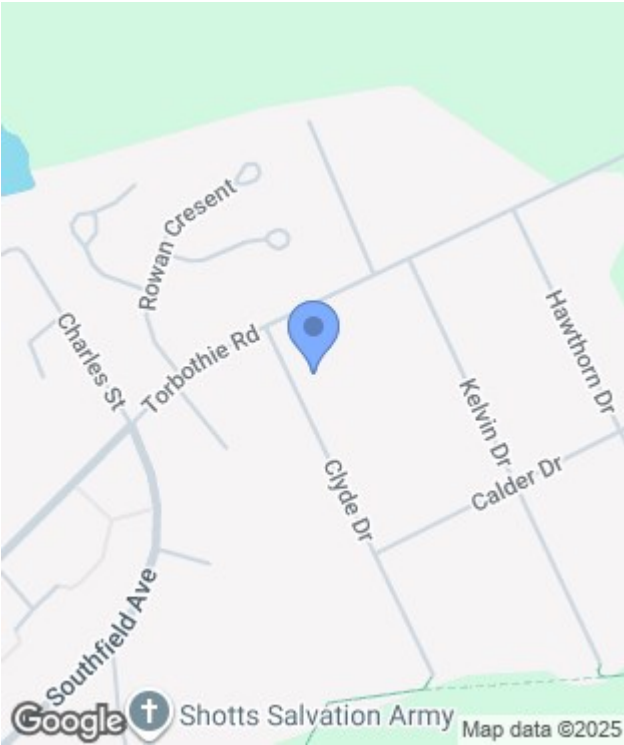


3 Clyde Drive, Shotts, ML7 5LY

Nestled in the desirable area of Clyde Drive, Shotts, this charming semi-detached bungalow presents an excellent opportunity for those seeking a comfortable and modern living space. Recently fully refurbished, the property boasts a fresh and inviting atmosphere, making it an ideal choice for first-time tenants, downsizers, or anyone looking for a peaceful retreat.







Energy Efficiency Rating		
	Current	Potential
Very energy efficient - lower running costs		
(92 plus) A		
(81-91) B		
(69-80) C		
(55-68) D		
(39-54) E		
(21-38) F		
(1-20) G		
Not energy efficient - higher running costs		
Scotland	EU Directive 2002/91/EC	

Environmental Impact (CO ₂) Rating		
	Current	Potential
Very environmentally friendly - lower CO ₂ emissions		
(02 plus) A		
(81-91) B		
(69-80) C		
(55-68) D		
(39-54) E		
(21-38) F		
(1-20) G		
Not environmentally friendly - higher CO ₂ emissions		
Scotland	EU Directive 2002/91/EC	