



28 Castlehill Crescent, Law, ML8 5LY



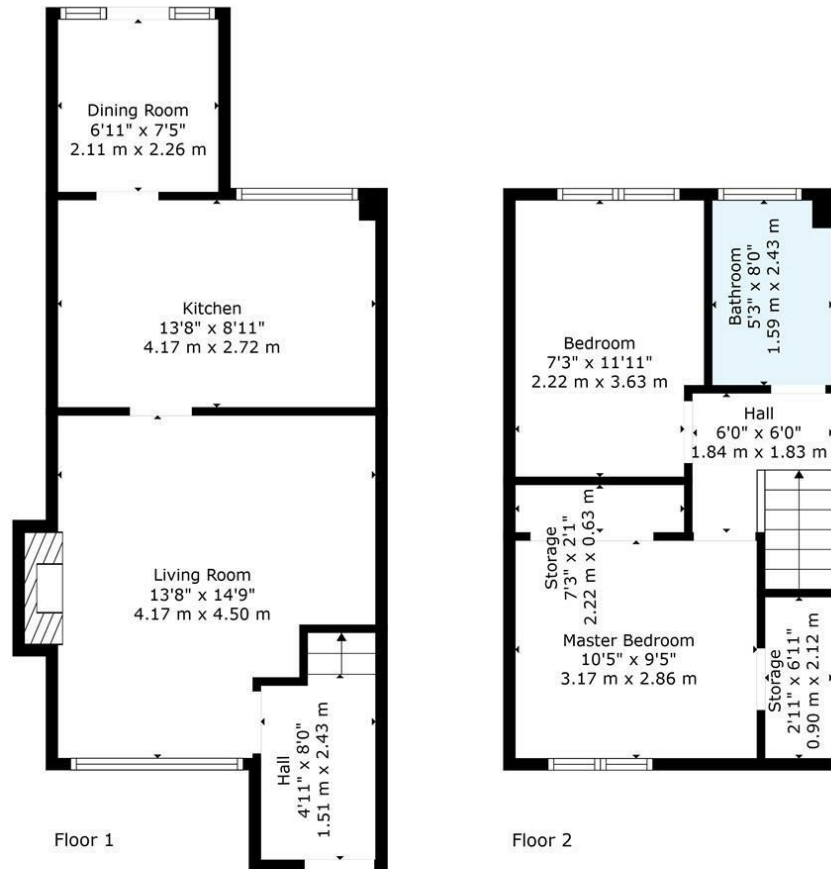
28 Castlehill Crescent, Law, ML8 5LY

Set in the charming residential area of Castlehill Crescent, Law, this delightful end terrace house offers a perfect blend of comfort and modern living, this well-maintained property spans an impressive 872 square feet, providing ample space for a small family or professionals seeking a peaceful retreat.

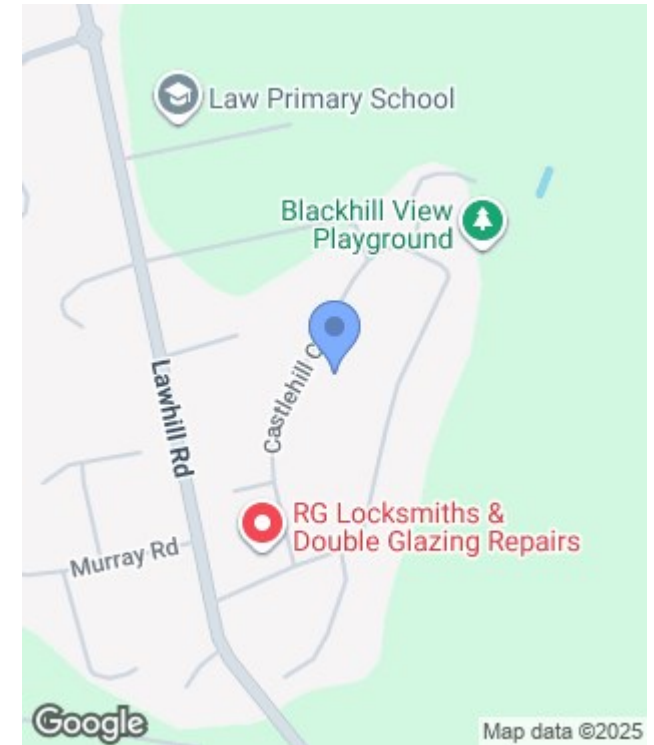
The home features two inviting reception rooms, ideal for entertaining guests or







TOTAL: 700 sq. ft, 65 m2
 FLOOR 1: 407 sq. ft, 38 m2, FLOOR 2: 293 sq. ft, 27 m2
 EXCLUDED AREAS: FIREPLACE: 8 sq. ft, 1 m2, STORAGE: 35 sq. ft, 3 m2, WALLS: 89 sq. ft, 7 m2
 Floor Plan Created By Cubicasa App. Measurements Deemed Highly Reliable But Not Guaranteed.



Energy Efficiency Rating		
	Current	Potential
Very energy efficient - lower running costs		
(92 plus) A		
(81-91) B		
(69-80) C		
(55-68) D		
(39-54) E		
(21-38) F		
(1-20) G		
Not energy efficient - higher running costs		
Scotland	EU Directive 2002/91/EC	

Environmental Impact (CO ₂) Rating		
	Current	Potential
Very environmentally friendly - lower CO ₂ emissions		
(92 plus) A		
(81-91) B		
(69-80) C		
(55-68) D		
(39-54) E		
(21-38) F		
(1-20) G		
Not environmentally friendly - higher CO ₂ emissions		
Scotland	EU Directive 2002/91/EC	

