



72 Murray Crescent, Wishaw, ML2 9EP



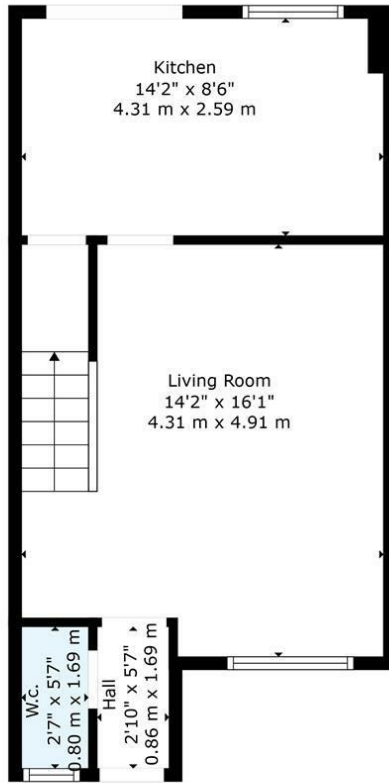
72 Murray Crescent, Wishaw, ML2 9EP

Positioned in the charming area of Murray Crescent, Newmains, Wishaw, this delightful three-bedroom family home offers a perfect blend of comfort and convenience. Situated within a popular estate, the property is ideal for families seeking a welcoming community atmosphere.

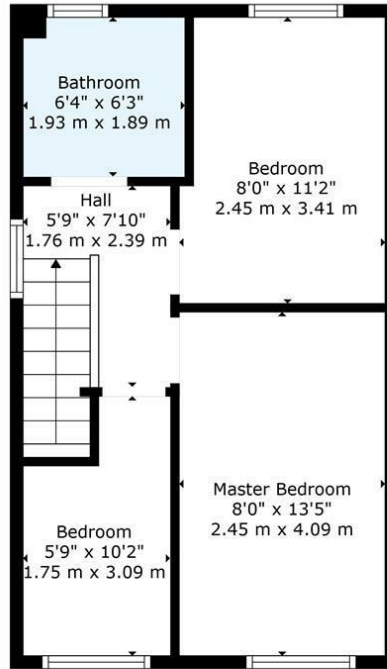
As you enter the house, you will find a spacious layout that is both practical and







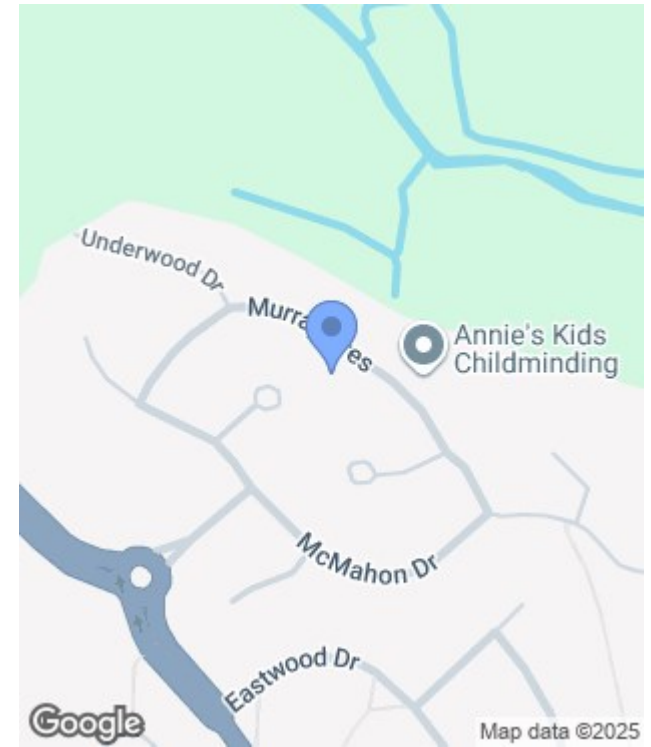
Floor 1



Floor 2



TOTAL: 731 sq. ft, 68 m2
 FLOOR 1: 378 sq. ft, 35 m2, FLOOR 2: 353 sq. ft, 33 m2
 WALLS: 84 sq. ft, 7 m2
 Floor Plan Created By Cubicasa App. Measurements Deemed Highly Reliable But Not Guaranteed.



Energy Efficiency Rating		
	Current	Potential
Very energy efficient - lower running costs		
(92 plus) A		
(81-91) B		
(69-80) C		
(55-68) D		
(39-54) E		
(21-38) F		
(1-20) G		
Not energy efficient - higher running costs		
Scotland	EU Directive 2002/91/EC	

Environmental Impact (CO ₂) Rating		
	Current	Potential
Very environmentally friendly - lower CO ₂ emissions		
(92 plus) A		
(81-91) B		
(69-80) C		
(55-68) D		
(39-54) E		
(21-38) F		
(1-20) G		
Not environmentally friendly - higher CO ₂ emissions		
Scotland	EU Directive 2002/91/EC	