



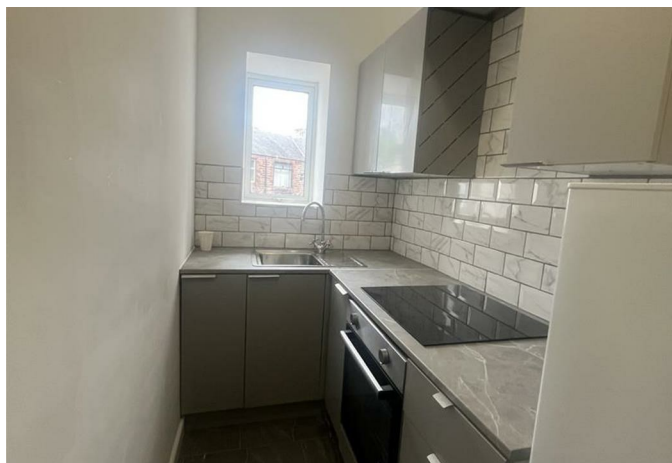
flat 2/2 16 Main Street, Newmilns, KA16 9BX

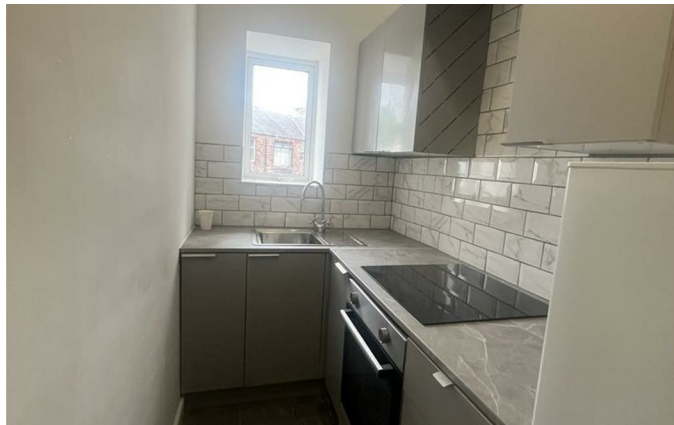


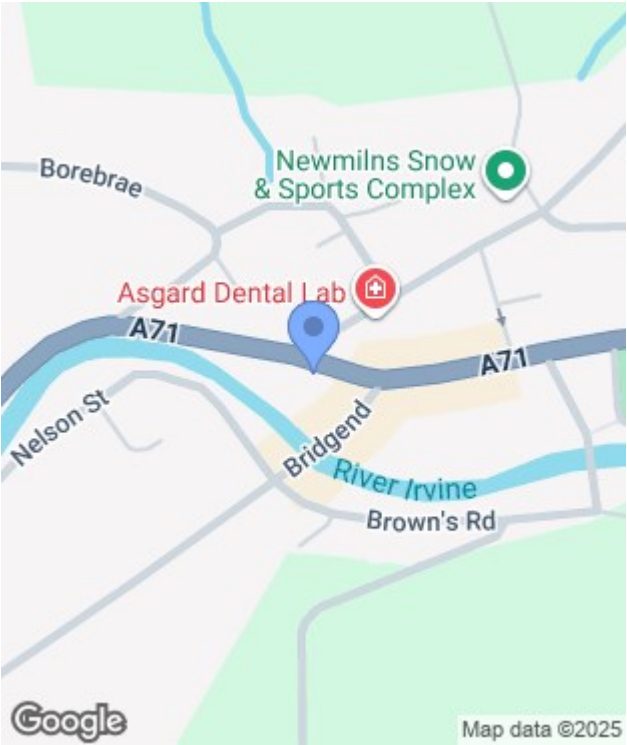


## flat 2/2 16 Main Street, Newmilns, KA16 9BX

Nestled in the heart of Newmilns on Main Street, this charming one-bedroom upper flat with floored loft area presents an excellent opportunity for those seeking a modern living space in a vibrant town centre. Recently refurbished throughout, the property boasts a fresh and contemporary feel, making it an ideal choice for individuals or couples looking for a comfortable home.







| Energy Efficiency Rating                    |                         |           |
|---|-------------------------|-----------|
|   | Current                 | Potential |
| Very energy efficient - lower running costs |                         |           |
| (92 plus) A                                 |                         |           |
| (81-91) B                                   |                         |           |
| (69-80) C                                   |                         |           |
| (55-68) D                                   |                         |           |
| (39-54) E                                   |                         |           |
| (21-38) F                                   |                         |           |
| (1-20) G                                    |                         |           |
| Not energy efficient - higher running costs |                         |           |
| Scotland                                    | EU Directive 2002/91/EC |           |

| Environmental Impact (CO <sub>2</sub> ) Rating                  |                         |           |
|---|-------------------------|-----------|
|   | Current                 | Potential |
| Very environmentally friendly - lower CO <sub>2</sub> emissions |                         |           |
| (92 plus) A   |                         |           |
| (81-91) B   |                         |           |
| (69-80) C   |                         |           |
| (55-68) D   |                         |           |
| (39-54) E   |                         |           |
| (21-38) F   |                         |           |
| (1-20) G  |                         |           |
| Not environmentally friendly - higher CO <sub>2</sub> emissions |                         |           |
| Scotland  | EU Directive 2002/91/EC |           |