



7 McCardle Way, Wishaw, ML2 9BW



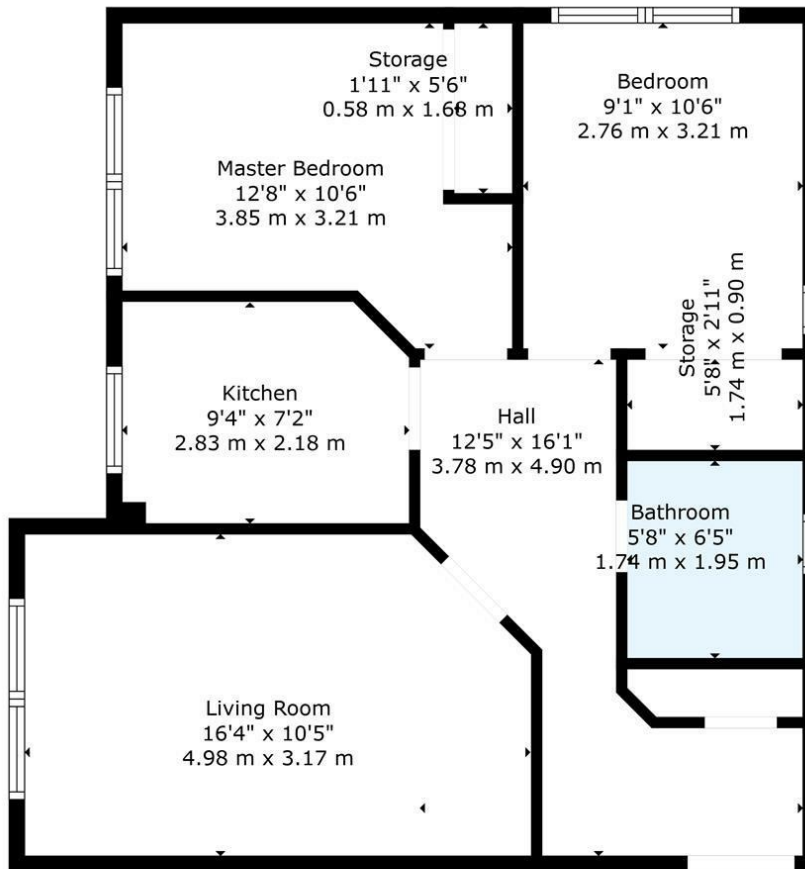
7 Mccardle Way, Wishaw, ML2 9BW

Welcome to this charming two-bedroom flat located on Mccardle Way in the peaceful residential area of Newmains, Wishaw. This delightful property offers a serene living environment, perfect for those seeking a comfortable home away from the hustle and bustle of city life.

As you enter the flat, you will find a well-proportioned reception room that provides

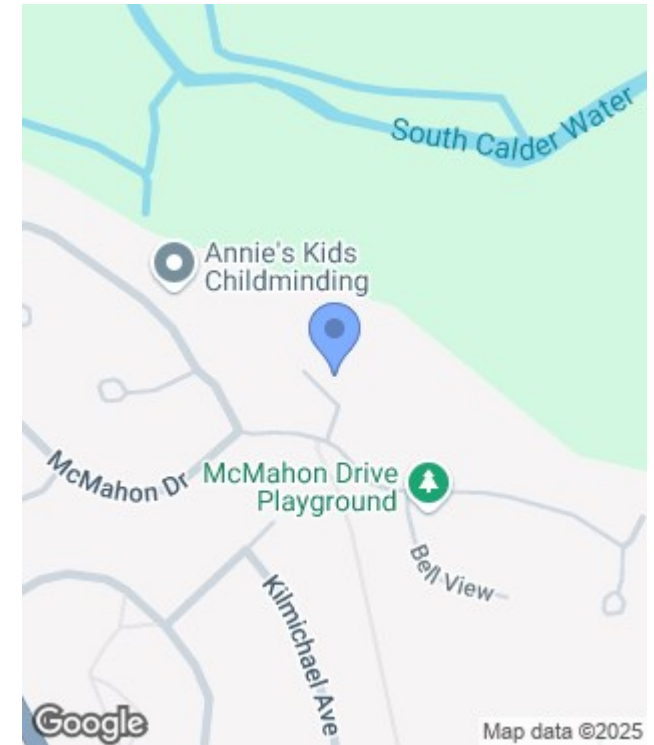






TOTAL: 598 sq. ft, 56 m²
 FLOOR 1: 598 sq. ft, 56 m²
 EXCLUDED AREAS: STORAGE: 27 sq. ft, 3 m²
 WALLS: 53 sq. ft, 4 m²

Floor Plan Created by Cubicasa App. Measurements Deemed Highly Reliable But Not Guaranteed.



Energy Efficiency Rating		
	Current	Potential
Very energy efficient - lower running costs		
(92 plus) A		
(81-91) B		
(69-80) C		
(55-68) D		
(39-54) E		
(21-38) F		
(1-20) G		
Not energy efficient - higher running costs		
Scotland	EU Directive 2002/91/EC	

Environmental Impact (CO ₂) Rating		
	Current	Potential
Very environmentally friendly - lower CO ₂ emissions		
(92 plus) A		
(81-91) B		
(69-80) C		
(55-68) D		
(39-54) E		
(21-38) F		
(1-20) G		
Not environmentally friendly - higher CO ₂ emissions		
Scotland	EU Directive 2002/91/EC	