



26 Dakala Court, Wishaw, ML2 7AE



## 26 Dakala Court, Wishaw, ML2 7AE

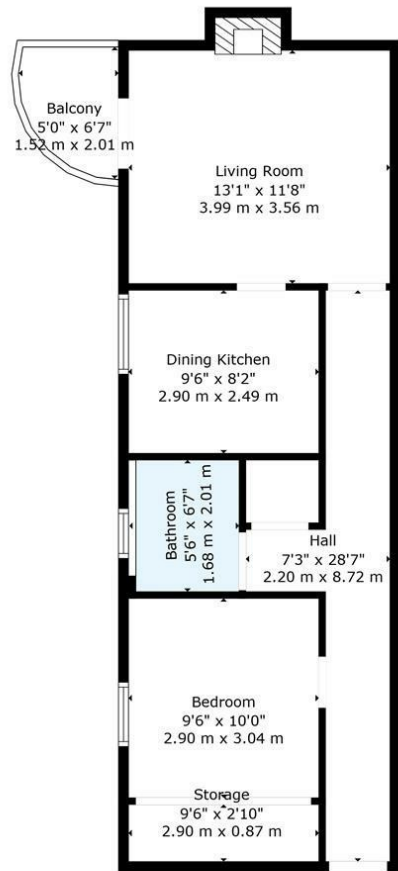
Welcome to this charming one-bedroom flat located in the desirable Dakala Court, Wishaw. This property is an ideal choice for first-time buyers seeking a comfortable and convenient living space.

Upon entering, you will find a well-proportioned reception room that offers a warm and inviting atmosphere, perfect for relaxing or entertaining guests. The flat features a









**TOTAL: 506 sq. ft, 47 m2**  
FLOOR 1: 506 sq. ft, 47 m2  
EXCLUDED AREAS: STORAGE: 27 sq. ft, 3 m2, BALCONY: 27 sq. ft, 3 m2, FIREPLACE: 7 sq. ft, 1 m2  
WALLS: 53 sq. ft, 4 m2

Floor Plan Created By Cubicasa App. Measurements Deemed Highly Reliable But Not Guaranteed.



Energy Efficiency Rating		
	Current	Potential
Very energy efficient - lower running costs		
(92 plus) A		
(81-91) B		
(69-80) C		
(55-68) D		
(39-54) E		
(21-38) F		
(1-20) G		
Not energy efficient - higher running costs		
Scotland	EU Directive 2002/91/EC	

Environmental Impact (CO <sub>2</sub> ) Rating		
	Current	Potential
Very environmentally friendly - lower CO <sub>2</sub> emissions		
(02 plus) A		
(81-91) B		
(69-80) C		
(55-68) D		
(39-54) E		
(21-38) F		
(1-20) G		
Not environmentally friendly - higher CO <sub>2</sub> emissions		
Scotland	EU Directive 2002/91/EC	