



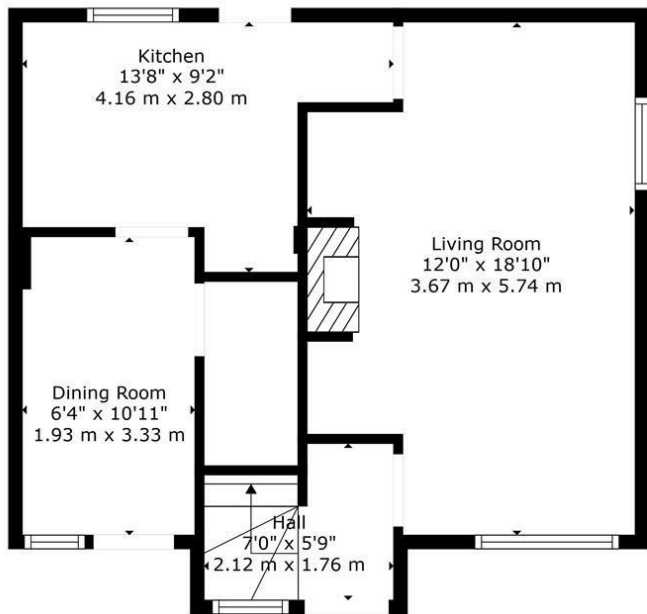
3 Keir Crescent, Wishaw, ML2 7JY

3 Keir Crescent, Wishaw, ML2 7JY

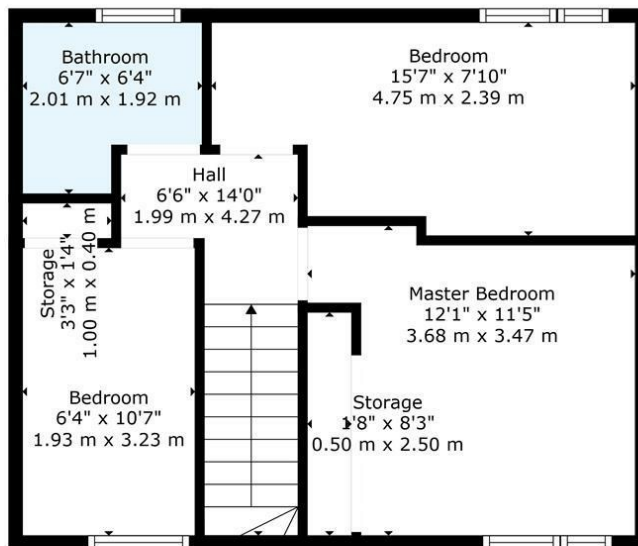
Nestled in the charming area of Keir Crescent, Wishaw, this delightful end terraced house presents an excellent opportunity for families and first-time buyers alike. The property boasts three well-proportioned bedrooms, providing ample space for relaxation and personalisation. The inviting reception room serves as a perfect gathering space, ideal for entertaining guests or enjoying quiet evenings with family.



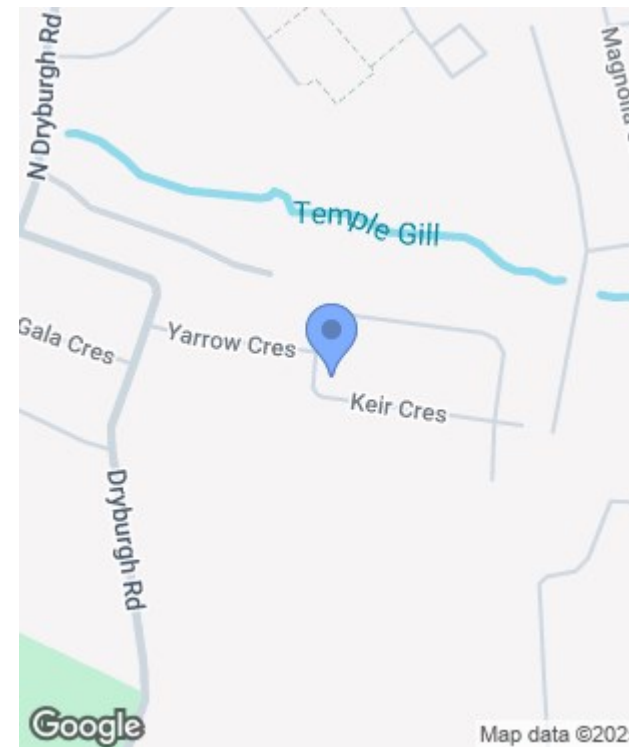




Floor 1



Floor 2



TOTAL: 825 sq. ft, 77 m²
 FLOOR 1: 418 sq. ft, 39 m², FLOOR 2: 407 sq. ft, 38 m²
 EXCLUDED AREAS: UNDEFINED: 23 sq. ft, 2 m², STORAGE: 17 sq. ft, 1 m²
 WALLS: 88 sq. ft, 8 m²

Floor Plan Created By Cubicasa App. Measurements Deemed Highly Reliable But Not Guaranteed.



Energy Efficiency Rating		
	Current	Potential
Very energy efficient - lower running costs		
(92 plus) A		
(81-91) B		
(69-80) C		
(55-68) D		
(39-54) E		
(21-38) F		
(1-20) G		
Not energy efficient - higher running costs		
Scotland	EU Directive 2002/91/EC	

Environmental Impact (CO ₂) Rating		
	Current	Potential
Very environmentally friendly - lower CO ₂ emissions		
(92 plus) A		
(81-91) B		
(69-80) C		
(55-68) D		
(39-54) E		
(21-38) F		
(1-20) G		
Not environmentally friendly - higher CO ₂ emissions		
Scotland	EU Directive 2002/91/EC	