



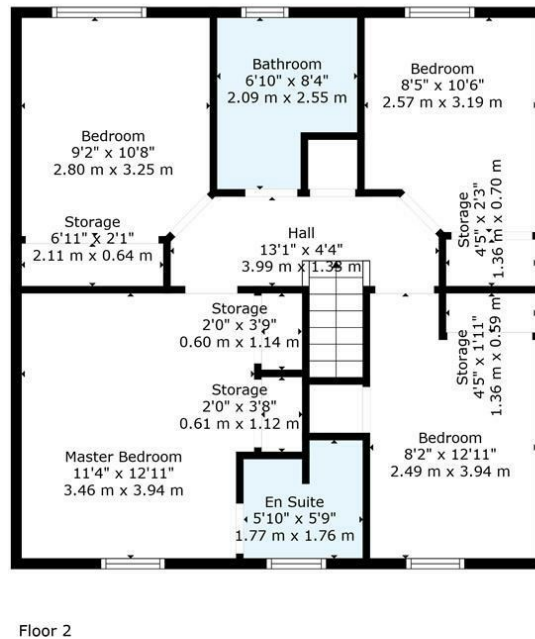
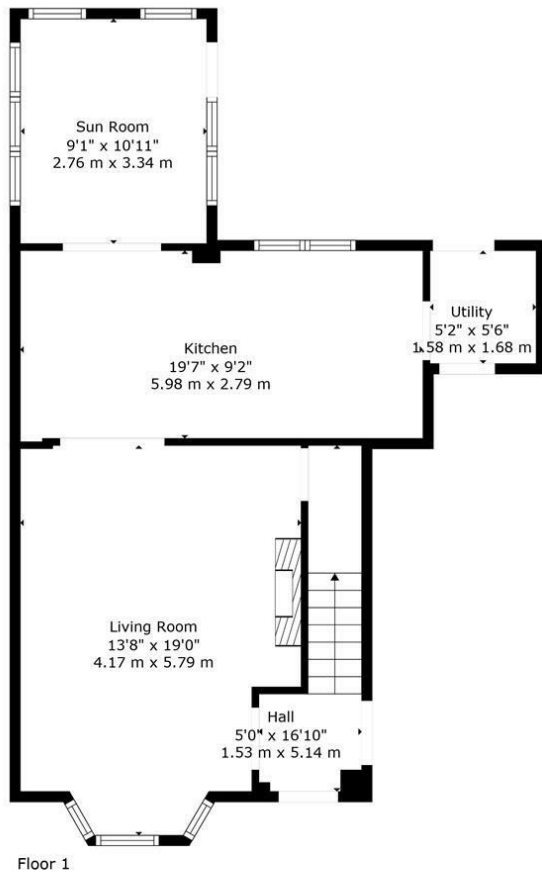
83 Bluebell Wynd, Wishaw, ML2 0PP

83 Bluebell Wynd, Wishaw, ML2 0PP

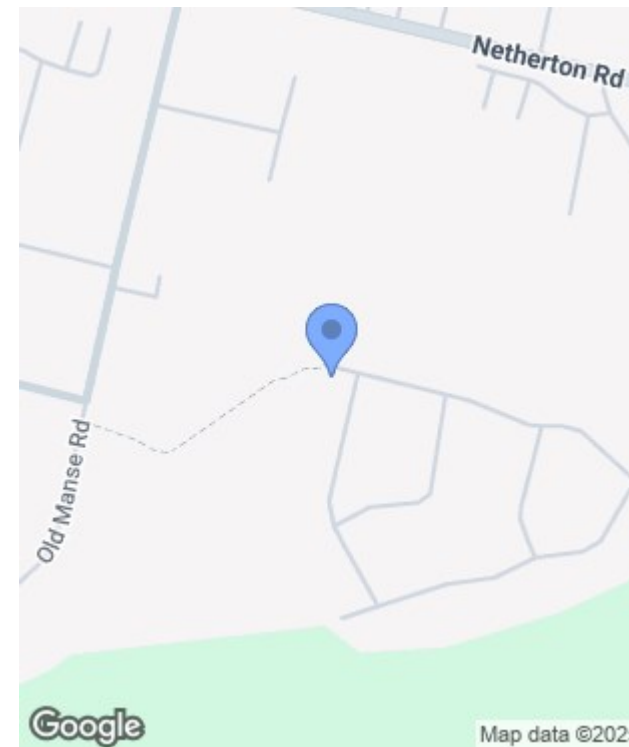
Set in the sought-after Bluebell Wynd in Wishaw, this stunning family home offers an exceptional living experience. With five spacious bedrooms and three well-appointed bathrooms, this property is designed to accommodate the needs of a growing family. The house has been thoughtfully extended and converted, maximising space and ensuring that every corner is utilised effectively.







TOTAL: 1222 sq. ft, 114 m²
 FLOOR 1: 610 sq. ft, 57 m², FLOOR 2: 612 sq. ft, 57 m²
 EXCLUDED AREAS: STORAGE: 48 sq. ft, 5 m²
 Floor Plan Created By Cubicasa App. Measurements Deemed Highly Reliable But Not Guaranteed.



Energy Efficiency Rating		
	Current	Potential
Very energy efficient - lower running costs		
(92 plus) A		
(81-91) B		
(69-80) C		
(55-68) D		
(39-54) E		
(21-38) F		
(1-20) G		
Not energy efficient - higher running costs		
Scotland	EU Directive 2002/91/EC	

Environmental Impact (CO ₂) Rating		
	Current	Potential
Very environmentally friendly - lower CO ₂ emissions		
(92 plus) A		
(81-91) B		
(69-80) C		
(55-68) D		
(39-54) E		
(21-38) F		
(1-20) G		
Not environmentally friendly - higher CO ₂ emissions		
Scotland	EU Directive 2002/91/EC	